

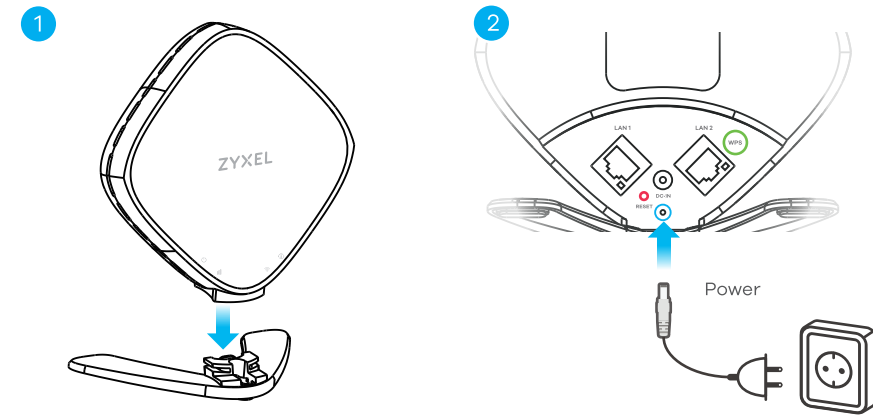
Quick Start Guide

WX3310-B0

Dual-Band Wireless AX Gigabit Access Point / Extender
Zyxel MPro Mesh™ Whole-home WiFi Solution

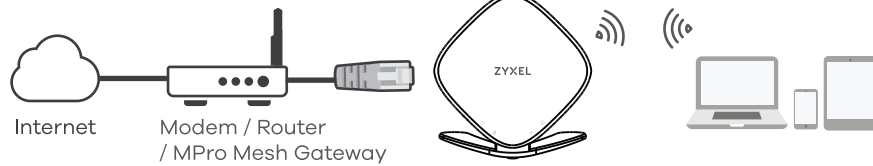
ZYXEL

Hardware Installation



Choose AP or Repeater Mode

AP Mode

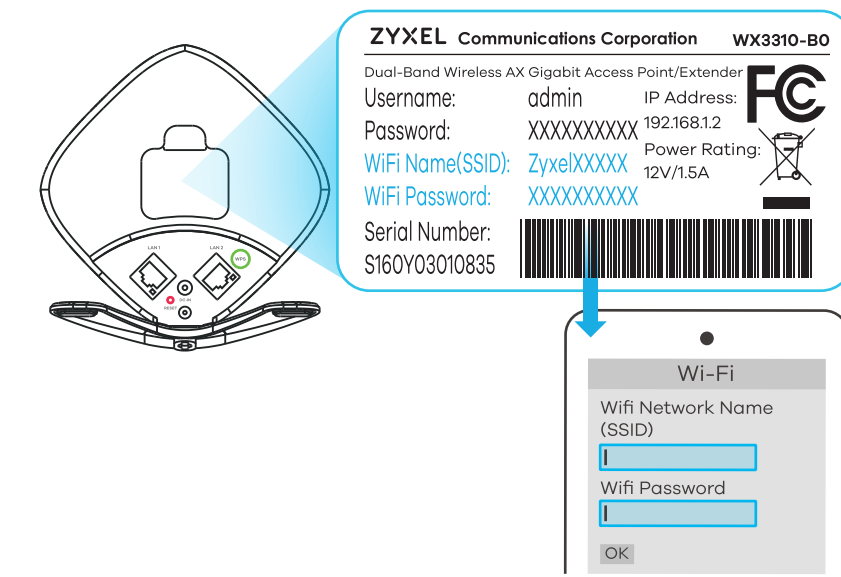


Repeater Mode

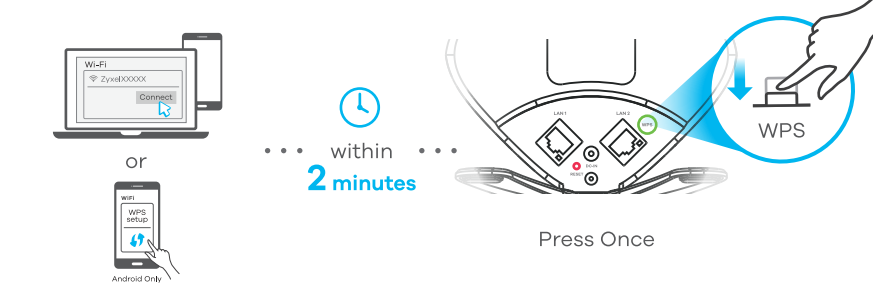


AP Mode WiFi Connection

Option A: Using SSID

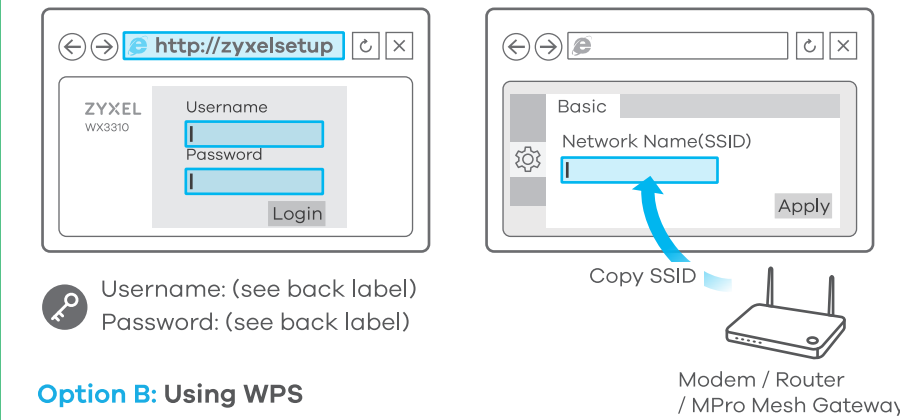


Option B: Using WPS

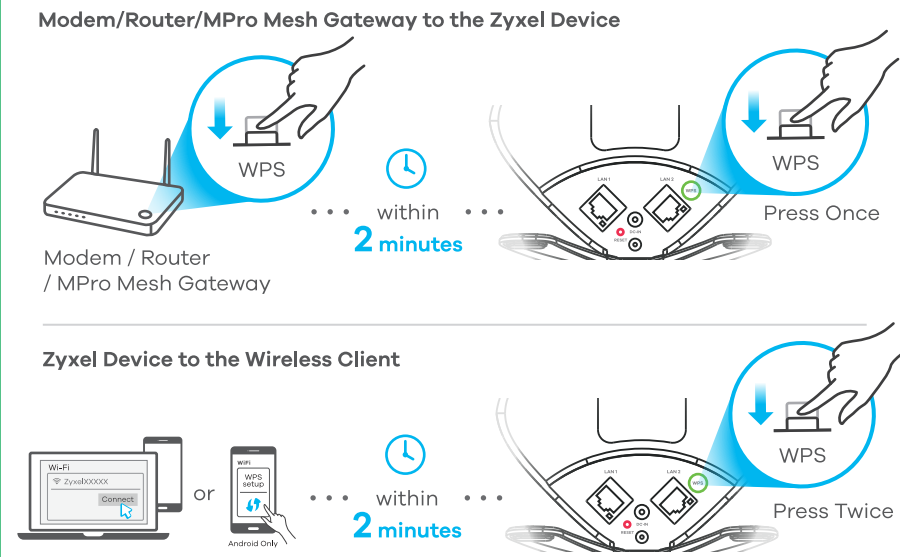


Repeater Mode WiFi Connection

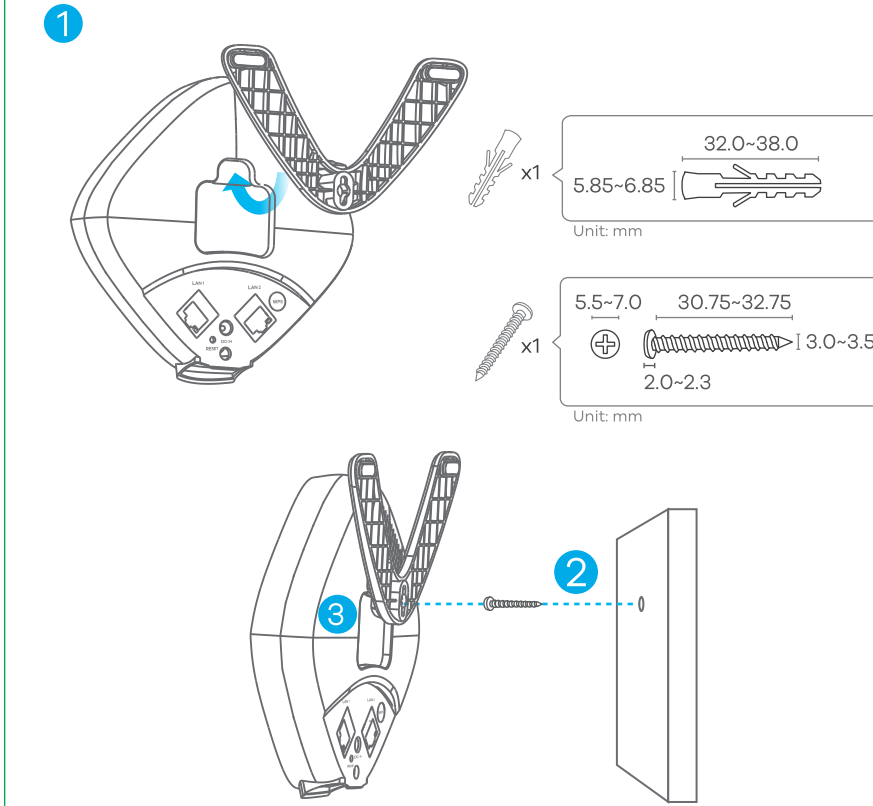
Option A: Using SSID



Option B: Using WPS



Wall Mounting (Optional)



WPS	Green Blinking - WPS process in progress. Red On - WPS failed. Blinking - Overlapping WPS processes. Wait for the LED to go off, then initiate WPS again. Off No WPS activity.
Link Quality	AP Mode (wired connection) Green On - Connected to the modem/router. Blinking - Connected, but not synced with the Zyxel MPro Mesh gateway. Off There is no connection to the modem/router. Repeater Mode (wireless connection) Green On - Link quality is good. Blinking - Link quality is good, but not synced with the Zyxel MPro Mesh gateway. Amber On - Place the Zyxel Device further from the modem/router. Blinking - Place the Zyxel Device further from the modem/router. Not synced with the Zyxel MPro Mesh gateway. Red On - Place the Zyxel Device closer to the modem/router. Blinking - Place the Zyxel Device closer to the modem/router. Not synced with the Zyxel MPro Mesh gateway. Off There is no connection to the modem/router.
WiFi	Green On - 2.4G and 5G wireless radios are ready. Blinking - Sending and receiving data. Off The 2.4G or 5G wireless radio is not ready or has failed.
Power	Green On - The Zyxel Device is ready. Blinking - The Zyxel Device is booting. Red On - System failure. Blinking - Firmware upgrading. Off The Zyxel Device is not receiving power or is turned off.

Note: Zyxel MPro Mesh is compatible with EasyMesh™.

Support Information

65-020-331001B

North America + 1 800 978 7222
USA support@zyxel.com

- Attach the bracket to the bottom of the Zyxel Device as shown.
- Use the included power adaptor to connect the Zyxel Device power port to an appropriate power outlet.

AP Mode: Use this mode to add a wireless network in your home or office. Use an Ethernet cable to connect LAN1 or LAN2 on the Zyxel Device to an Ethernet port on your modem/router/MPro Mesh gateway.

Repeater Mode: Use this mode to configure the Zyxel Device to connect wirelessly to your existing modem/router/MPro Mesh gateway and extend the current network.

Option A: AP Mode WiFi Connection Using SSID: Note the SSID and password from the Zyxel Device's back label. On your laptop or smartphone, search for the AP with this SSID and then enter the password to connect wirelessly to the Zyxel Device.

Option B: AP Mode WiFi Connection Using WPS: Press the Zyxel Device's WPS button once. The WPS LED should start blinking. Press the WPS button on the client within two minutes. Wait for the WPS LED to turn steady green indicating the WPS process has finished. If it turns red, the WPS process has failed.

Option A: Repeater Mode WiFi Connection Using SSID: Note the SSID and password on your modem/router/MPro Mesh gateway or AP and enter them in the Zyxel Device web configurator. If the Zyxel Device is connected to a modem/router/MPro Mesh gateway, use <https://zyxelsetup>. Otherwise, use the Zyxel Device's default static IP address (192.168.1.2). Make sure the IP address of your computer is in the range between 192.168.1.3 and 192.168.1.254. In the web configurator, go to **Networking > AP Connection > Station**. Enter the SSID and password from your modem/router/MPro Mesh gateway or AP. On your laptop or smartphone, search for the AP with this SSID and then enter the password to connect wirelessly to the Zyxel Device.

Option B: Repeater Mode WiFi Connection Using WPS:

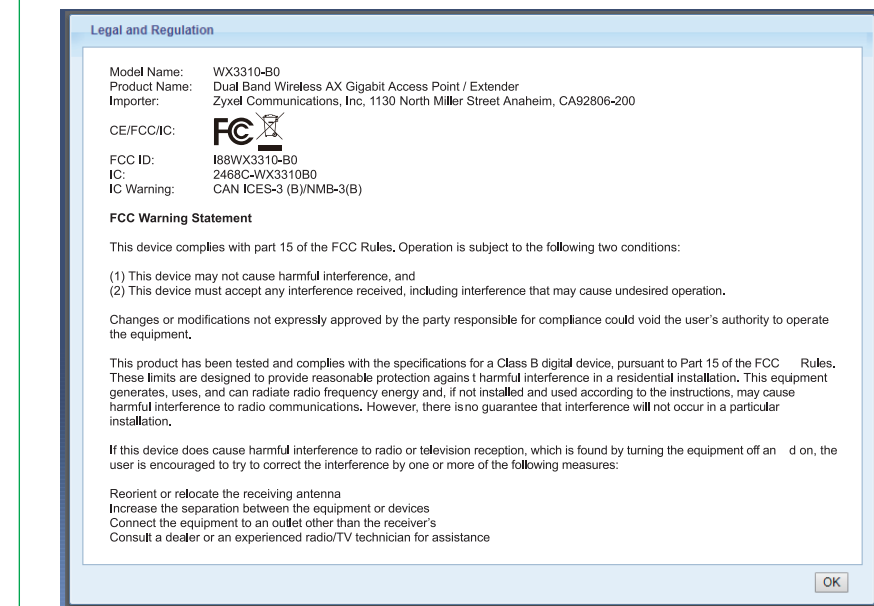
Modem/Router to the Zyxel Device: Press the Zyxel Device's WPS button once to copy the WiFi settings from your modem/router/MPro Mesh gateway to the Zyxel Device. Press the WPS button on your modem/router/MPro Mesh gateway within two minutes. Wait for the WPS LED to turn steady green, which indicates that the WPS process is finished. If it turns red, the WPS process has failed.

Zyxel Device to the Wireless Client: Press the Zyxel Device's WPS button twice within 7 seconds to copy the WiFi settings from the Zyxel Device to a wireless client, such as your smartphone or laptop. The WPS LED should start blinking. Press the WPS button on the client within two minutes. Wait for the WPS LED to turn steady green, which indicates that the WPS process has finished. If it turns red, the WPS process has failed.

- Attach the bracket to the back of the Zyxel Device as shown.
- Drill a hole in the wall. Insert the screw anchor and screw into the hole.
- Place the Zyxel Device so the wall mount hole lines up with the screw. Slide the Zyxel Device down gently to fix it into place.

FCC Safety Warning

You will see the FCC safety warning after you log into the web configurator. You can also see the FCC safety warning by going to <http://x.x.x.x/legalInfo.html>. Where "x.x.x.x" is the Zyxel Device's IP address.



See the User's Guide at www.zyxel.com for more information, including customer support and safety warnings.

US Importer
Zyxel Communications, Inc
1130 North Miller Street Anaheim, CA 92806-2001
<https://www.zyxel.com/us/en/>