



Quick Start Guide

Hardware Connections

- 1

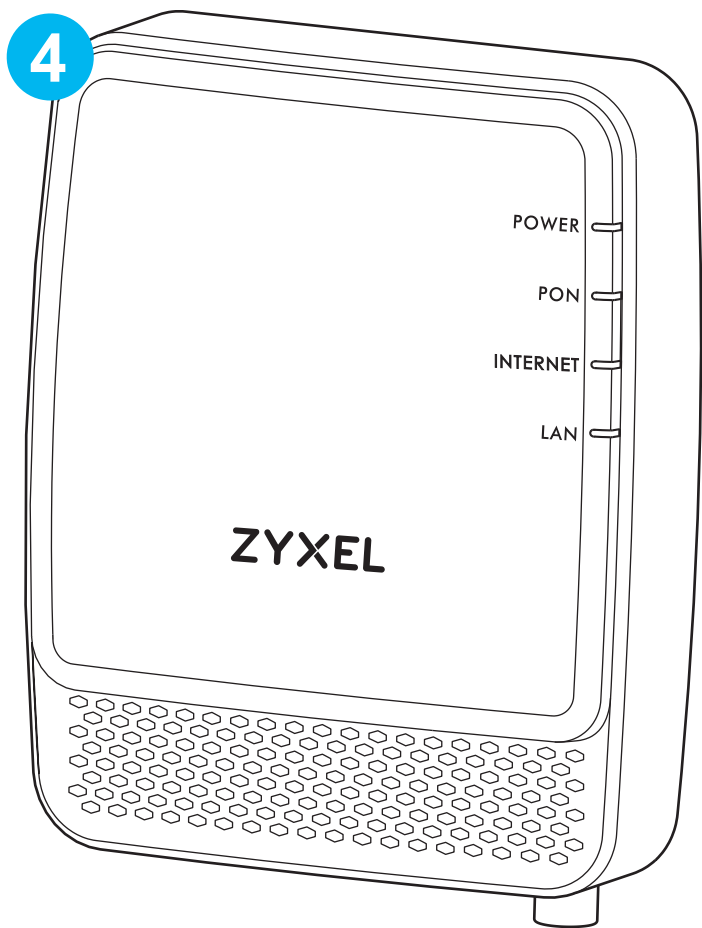
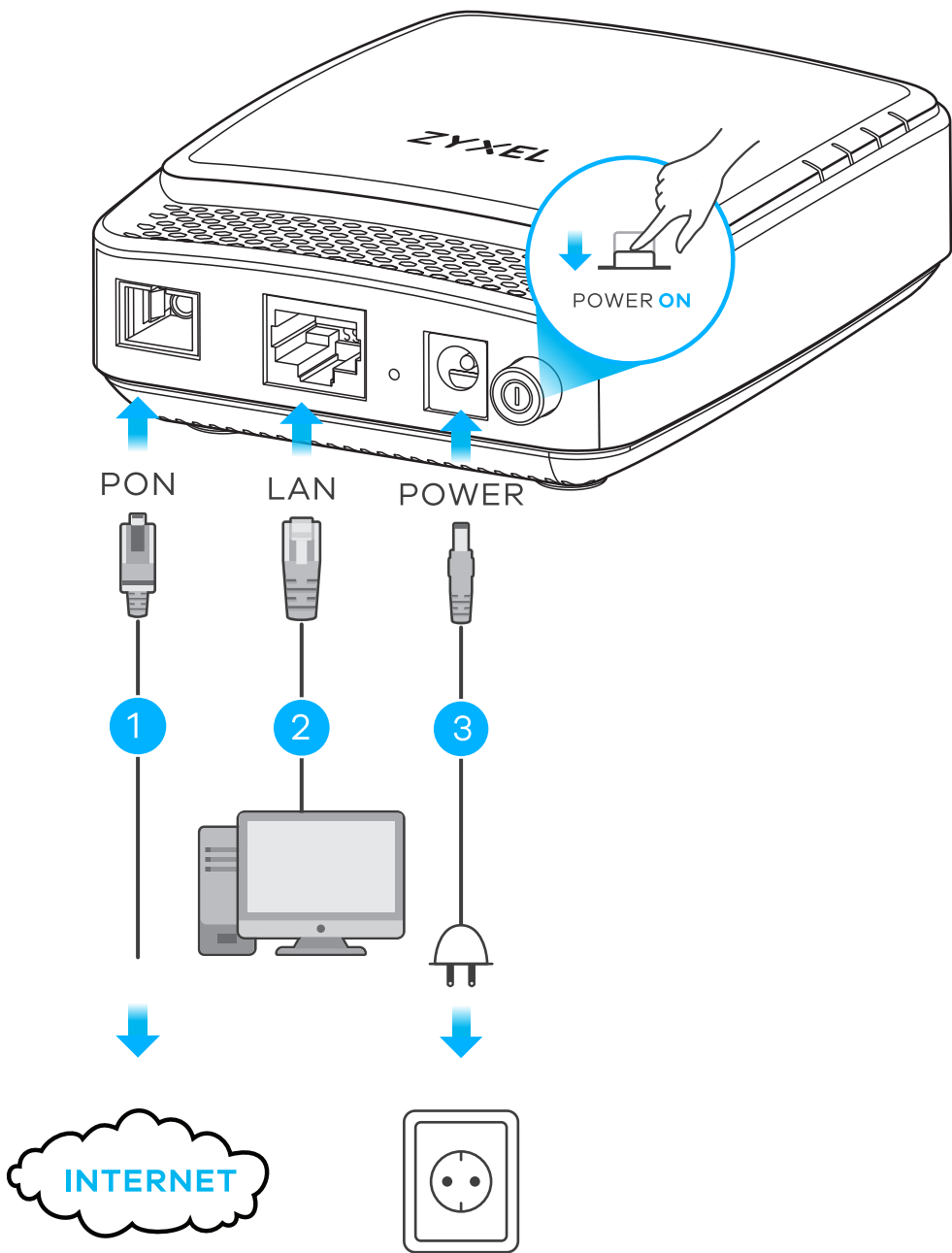
Connect the fiber optic cable to the PON port.









Warning! To avoid possible eye injury, do NOT look into an operating fiber-optic module's connector.
- 2

Connect a computer to the LAN port using the yellow Ethernet cable.
- 3

Connect the power cord to the PMG2005-T20E and press the power button.
- 4

Make sure the LEDs are on and check the status.



| | | |
|----------|--|--|
| POWER |  Green | On: Power on and system ready |
| |  Off | Off: Power off |
| PON |  Green | On: Successful GPON fiber link Blinking: Synchronizing with OLT (fiber terminal) |
| |  Off | Off: The fiber link is down. Restart the PMG2005-T20E. |
| INTERNET |  Green | On: IP connection ready Blinking: Transmitting IP traffic |
| |  Off | Off: Internet connection not ready |
| LAN |  Green | On: Successful Ethernet link Blinking: Transmitting/Receiving data on the Ethernet link |
| |  Off | Off: Ethernet connection is down. Reconnect the Ethernet cable to the LAN port. |

Troubleshooting

The PMG2005-T20E doesn't turn on.

- Make sure the power cable is connected, and you've pressed the power button.
- Make sure the power adaptor is connected to an appropriate power source. Make sure the power source is turned on.

I cannot see or access the Login screen in the Web Configurator.

- Make sure you are using the correct IP address.
 - The default IP address is 192.168.1.1.
 - If you changed the IP address and have forgotten it, you have to reset the PMG2005-T20E to its factory defaults.
- Make sure your Internet browser does not block pop-up windows and has JavaScript enabled.
- Make sure you have entered the **User Name** and **Admin Password** correctly.

Enter the default **User Name** (admin) and admin **Admin Password** (on the device label), and then click **Login**. If you changed the default password, please enter the new password. If you cannot remember the new password, use a pin to push the RESET button for more than 5 seconds to return the device to the factory defaults, including admin password on the back label.

I cannot access the Internet.

- Check the hardware connections and the LED behavior. If the **PON** LED is off, restart the PMG2005-T20E. Check if the fiber cable has come loose or is damaged. Contact the vendor to replace any damaged cables.
- If you were given ISP account information, log into the web configurator and check that the settings are correct in the **Interface > Internet** and **Maintenance > System Restart** menus.
- Disconnect all the cables from the PMG2005-T20E and reconnect them.

Note: If problems persist, please contact your vendor or customer support.

FCC Warning Statement

This device complies with part 15 of the FCC Rules. Operation is subject to the following two conditions:

(1) This device may not cause harmful interference, and

(2) this device must accept any interference received, including interference that may cause undesired operation.

NOTE: This equipment has been tested and found to comply with the limits for a Class B digital device, pursuant to part 15 of the FCC Rules. These limits are designed to provide reasonable protection against harmful interference in a residential installation. This equipment generates, uses and can radiate radio frequency energy and, if not installed and used in accordance with the instructions, may cause harmful interference to radio communications. However, there is no guarantee that interference will not occur in a particular installation. If this equipment does cause harmful interference to radio or television reception, which can be determined by turning the equipment off and on, the user is encouraged to try to correct the interference by one or more of the following measures:

- Reorient or relocate the receiving antenna.
- Increase the separation between the equipment and receiver.
- Connect the equipment into an outlet on a circuit different from that to which the receiver is connected.
- Consult the dealer or an experienced radio/TV technician for help.

Caution

Changes or modifications not expressly approved by the party responsible for compliance could void the user's authority to operate the equipment.

Safety Warnings

- DO NOT use this product near water, for example, in a wet basement or near a swimming pool.
 - DO NOT expose your device to dampness, dust or corrosive liquids.
 - DO NOT store things on the device.
 - DO NOT install, use, or service this device during a thunderstorm. There is a remote risk of electric shock from lightning.
 - Connect ONLY suitable accessories to the device.
 - DO NOT open the device or unit. Opening or removing covers can expose you to dangerous high voltage points or other risks.
 - ONLY qualified service personnel should service or disassemble this device. Please contact your vendor for further information.
 - Make sure to connect the cables to the correct ports.
 - Place connecting cables carefully so that no one will step on them or stumble over them.
 - Always disconnect all cables from this device before servicing or disassembling.
 - Please use the provided or designated connection cables/power cables/ adaptors. Connect it to the right supply voltage (for example, 110V AC in North America or 230V AC in Europe). If the power adaptor or cord is damaged, it might cause electrocution. Remove it from the device and the power source, repairing the power adapter or cord is prohibited. Contact your local vendor to order a new one.
 - DO NOT remove the plug and connect it to a power outlet by itself; always attach the plug to the power adaptor first before connecting it to a power outlet.
 - DO NOT allow anything to rest on the power adaptor or cord and do NOT place the product where anyone can walk on the power adaptor or cord.
 - DO NOT use the device outside, and make sure all the connections are indoors. There is a remote risk of electric shock from lightning.
 - CAUTION: Risk of explosion if battery (on the motherboard) is replaced by an incorrect type. Dispose of used batteries according to the instructions. Dispose of them at the applicable collection point for the recycling of electrical and electronic equipment. For detailed information about recycling of this product, please contact your local city office, your household waste disposal service or the store where you purchased the product.
 - DO NOT obstruct the device ventilation slots, as insufficient airflow may harm your device.
For example, do not place the device in an enclosed space such as a box or on a very soft surface such as a bed or sofa.
 - The following warning statements apply, where the disconnect device is not incorporated in the equipment or where the plug on the power supply cord is intended to serve as the disconnect device,
 - for permanently connected devices, a readily accessible disconnect device shall be incorporated external to the equipment;
 - for pluggable devices, the socket-outlet shall be installed near the equipment and shall be easily accessible.
 - Caution! The RJ-45 jacks are not used for telephone line connection.
- APPAREIL À LASER DE CLASSE 1
- Conforme au 21 CFR 1040.10 et au 1040.11, à l'exception de la conformité au IEC60825 3e éd., comme décrit dans « Laser Notice No. 56 » du 8 mai 2019.
- Attention – L'utilisation des commandes ou réglages ou l'exécution des procédures autres que celles spécifiées dans les présents exigences peuvent être la cause d'une exposition à un rayonnement dangereux.
- CLASS 1 LASER PRODUCT & "IEC 60825-1:2014"
- Complies with 21 CFR 1040.10 and 1040.11 except for conformance with IEC 60825-1 Ed. 3, as described in Laser Notice No. 56, dated May 8, 2019.
- Caution – Use of controls or adjustments or performance of procedures other than those specified herein may result in hazardous radiation exposure.