

PMG1005-T20C

GPON SFU with 1-port GbE LAN



Quick Start Guide

ENGLISH

Support Information



<https://www.zyxel.com/service-provider/global/en/tech-support>

EU Importer

Zyxel Communications A/S
Gladsaxevej 378, 2. th. 2860 Søborg, Denmark

UK Importer

Zyxel Communications UK Ltd.
2 Old Row Court, Rose Street, Wokingham,
RG40 1XZ, United Kingdom (UK)

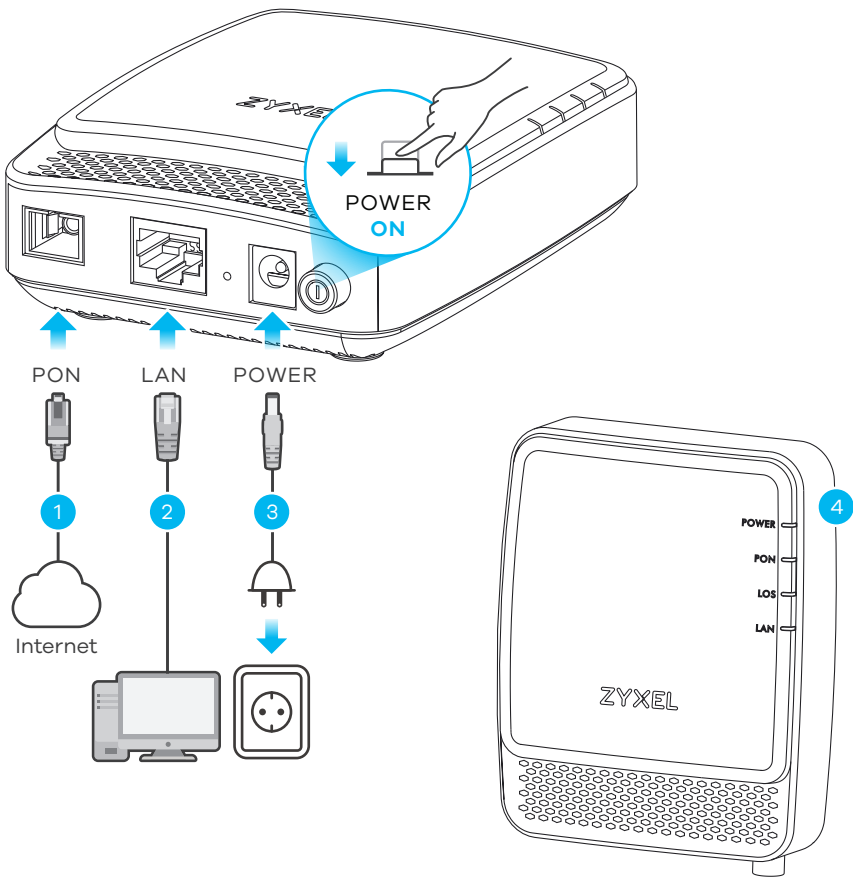
US Importer

Zyxel Communications, Inc.
1130 North Miller Street Anaheim, CA 92806-2001
<https://www.zyxel.com/service-provider/>

Go to <https://www.zyxel.com/service-provider/global/en/download-enquiry> to request a User's Guide for configuration assistance and related safety warnings.

Copyright © 2025 Zyxel and/or its affiliates. All Rights Reserved.

Step 1 Hardware Connections




- ① Connect the fiber optic cable to the PON port.
Warning! To avoid possible eye injury, do NOT look into an operating fiber optic module's connector.
- ② Connect a computer to the LAN port using the yellow Ethernet cable.
- ③ Connect the power cord to the PMG1005-T20C and press the power button.
- ④ Make sure the LEDs are on and check the status.


POWER, PON, LOS, and LAN LEDs Indicator Table


POWER	Green Off	On - Power on and system is ready. Power off.
PON	Green Off	On - Successful GPON fiber link. Blinking - Synchronizing with OLT (fiber terminal) The fiber link is down. Restart the PMG1005-T20C.
LOS (Loss of Signal)	Red Off	On - Not receiving an optical signal. Reconnect the fiber optic cable to the PON port. Blinking - Receiving a weak optical signal. Reposition the PMG1005-T20C. Receiving a normal optical signal.
LAN	Green Off	On - Successful Ethernet link. Blinking - Transmitting/Receiving data on the Ethernet link. Ethernet connection is down. Reconnect the Ethernet cable to the LAN port.

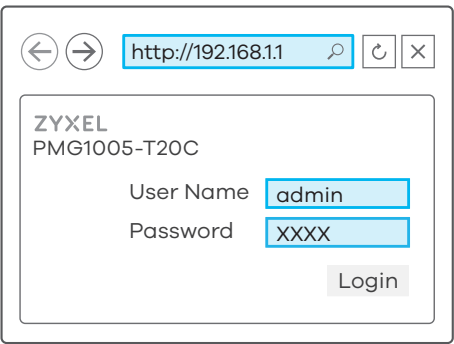
Configuration (Optional)



ZYXEL
Login User Name: admin
Login Password: XXXX

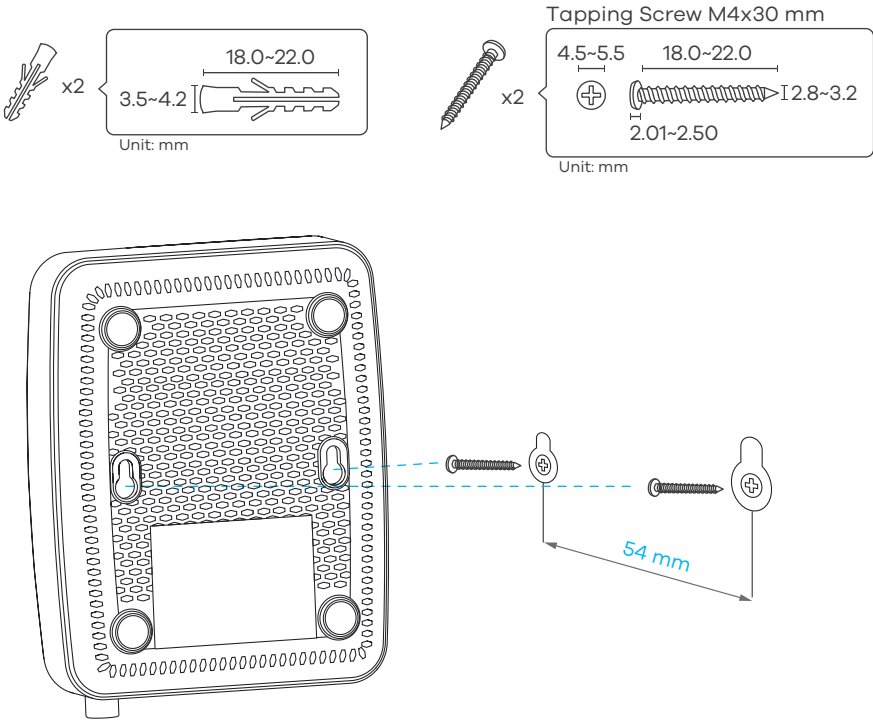
 <http://192.168.1.1>

 Login User Name: admin
Login Password: Refer to the device label (default)



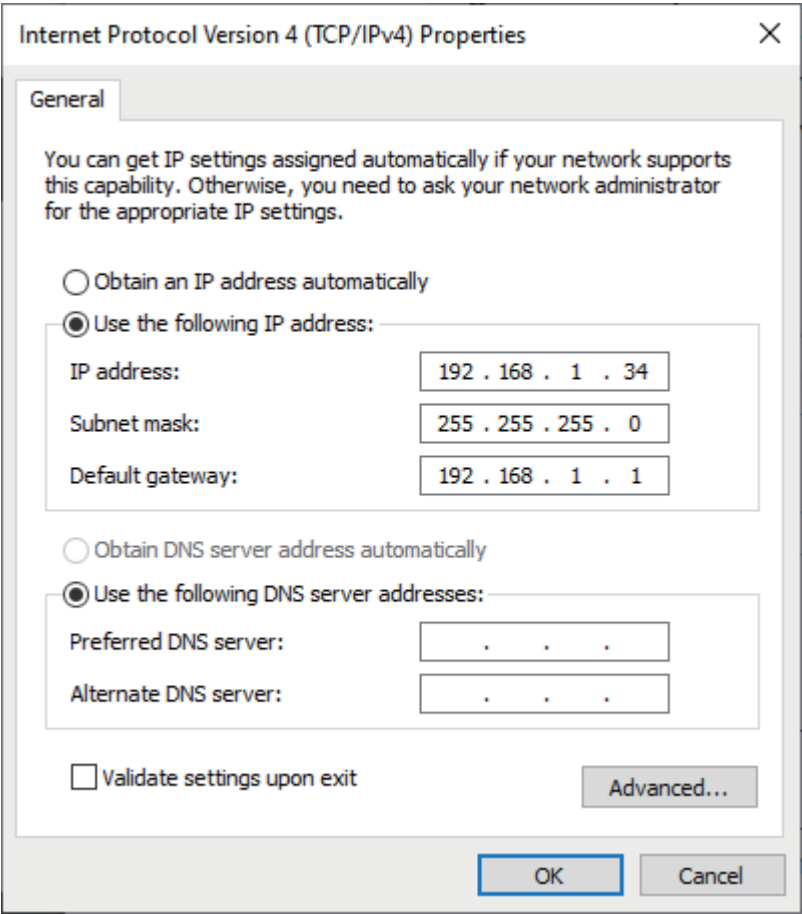
If you want to change the admin password, see traffic statistics, upload new firmware or reset to the factory defaults, open a web browser and go to <http://192.168.1.1>. Enter the default **User Name (admin)** and **Login Password (XXXX)**, and then click **Login**.

Wall Mounting (Optional)



- ① Drill two holes at the distance of 54 mm apart.
- ② Insert screw anchors and screws (not provided) into the holes.
- ③ Hang the PMG1005-T20C on the screws.

Troubleshooting



The PMG1005-T20C doesn't turn on.

- Make sure the power cable is connected, and you've pressed the power button.
- Make sure the power adapter is connected to an appropriate power source. Make sure the power source is turned on.

I cannot see or access the Login screen in the Web Configurator.

- Make sure your computer has an IP address in the same subnet as the PMG1005-T20C. If your PMG1005-T20C is using the default IP address, then your computer should have an IP address from 192.168.1.2 to 192.168.1.254. See your computer help.
 - Make sure you are using the correct IP address.
 - The default IP address is 192.168.1.1.
 - If you changed the IP address and have forgotten it, you have to reset the PMG1005-T20C to its factory defaults.
 - Make sure your Internet browser does not block pop-up windows and has JavaScript enabled.
 - Make sure you have entered the **User Name** and **Login Password** correctly.
- Enter the default **User Name (admin)** and admin **Login Password (1234)**, and then click **Login**. If you changed the default password, please enter the new password. If you cannot remember the new password, use a pin to push the RESET button for more than 5 seconds to return the PMG1005-T20C to the factory defaults, including admin password on the back label.

I cannot access the Internet.

- Check the hardware connections and the LED behavior. If the **PON** LED is off, restart the PMG1005-T20C. Check if the fiber optic cable has come loose or is damaged. Contact the vendor to replace any damaged cables.
- Disconnect all the cables from the PMG1005-T20C and reconnect them.

Note: If problems persist, please contact your vendor or customer support.