

PM7505-00

XGS-PON VoIP Bridge ONT with 10G LAN and UPS



Quick Start Guide  
ENGLISH

Package Contents



Device



Power  
Adapter



Ethernet  
Cable



Quick Start  
Guide

Support Information

<https://www.zyxel.com/service-provider/global/en/tech-support>



See the User's Guide at <https://www.zyxel.com/service-provider/> for more information, including customer support and safety warnings.

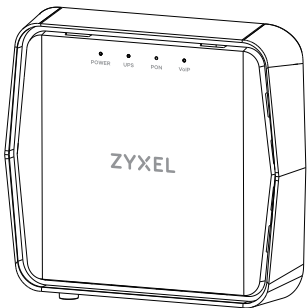
US Importer

Zyxel Communications, Inc  
1130 North Miller Street Anaheim, CA 92806-2001  
<https://www.zyxel.com/service-provider/>

Copyright © 2025 Zyxel and/or its affiliates. All Rights Reserved.

Hardware Connections

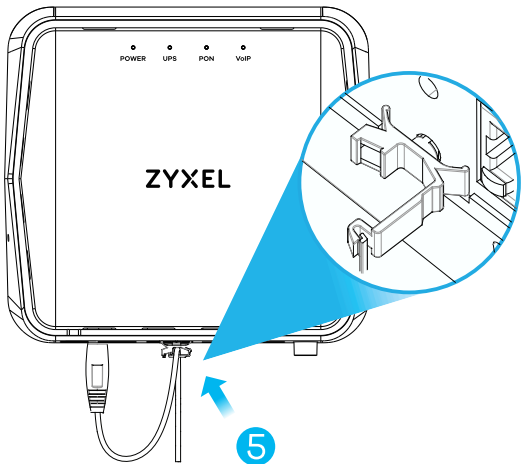
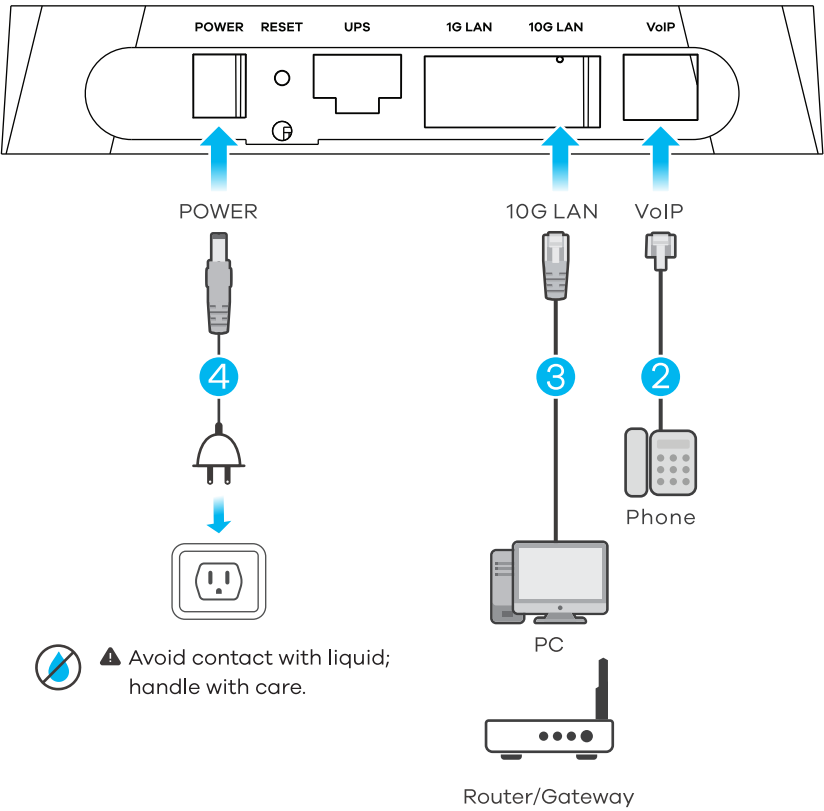
1



⚠ To avoid possible eye injury, do NOT look into an operating fiber module's connector.

Warning! Do NOT remove the Device from the fiber box or open the fiber box. Opening the fiber box could damage the fiber optic cable. ONLY qualified service personnel should service or disassemble the Device and fiber box. Contact your ISP for further information.

Device installed on the fiber box



- 1 Place the Device in the fiber box installed by the ISP.
- 2 Connect a phone to the **VoIP** port using the gray telephone cable.
- 3 Connect a computer, router, or gateway to the **10G LAN** port using the white Ethernet cable.
- 4 Use the included power adapter to connect the power plug to a power outlet.
- 5 Press the cable clip to open it. Close it around the power adapter cable to prevent accidental unplugging.

POWER	<div>Green</div> <b>On</b> - The Device is turned on and has finished booting. <div>Blinking</div> - The Device is starting up. <div>Red</div> <b>On</b> - The Device detects a system error. <div>Blinking</div> - The firmware is upgrading. <div>Off</div> The power is off.
UPS	<div>Green</div> <b>On</b> - The AC power is off and the UPS (battery backup) is providing power normally. <div>Blinking</div> - The battery is functioning abnormally. For example, the voltage exceeds the expected range. <div>Off</div> The battery is not in use or cannot be charged.
PON	<div>Green</div> <b>On</b> - The PON link to the OLT is up and receiving an optical signal of normal strength. <div>Blinking</div> - The Device is trying to establish a link to the OLT. <div>Red</div> <b>Blinking</b> - The PON link to the OLT is up but receiving low optical signal strength.
VoIP	<div>Green</div> <b>On</b> - A SIP account for outgoing calls is enabled and registered. The phone is on-hook and idle. <div>Blinking</div> - The phone is off-hook or ringing for an incoming call. <div>Amber</div> <b>On</b> - A SIP account is registered. The phone is on-hook and idle, and there is a voice message. <div>Blinking</div> - A SIP account is registered. The phone is off-hook or ringing for an incoming call and there is a voice message. <div>Off</div> The VoIP function is turned-off (deactivated) or a SIP account is not registered.
1G/10G LAN	The 1G/10G LAN LED is located on the Ethernet port. <div>Green</div> <b>On</b> - The Ethernet device is connected. <div>Blinking</div> - The Device is transmitting and receiving data. <div>Off</div> No Ethernet device is connected.