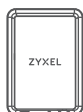





Quick Start Guide


Package Contents




Zyxel Device




GbE Cable




Gigabit PoE Injector




Plug



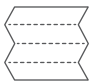
Cable Gland



SIM Card Slot Cover with three M3 Screws




Safety Warnings




Quick Start Guide


Mounting Kit



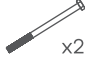
M8 Washers x2




M8 Spring Washers x2




M6 Flange Nuts x4



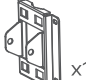
Screw Bolts M8 x2




Nylon Wall Plugs x4




Tapping Screws M4 x4




Main Bracket x1



Middle Bracket x1



Device Bracket x1



Hose Clamps x2

Support Information

<https://service-provider.zyxel.com/global/en/tech-support>

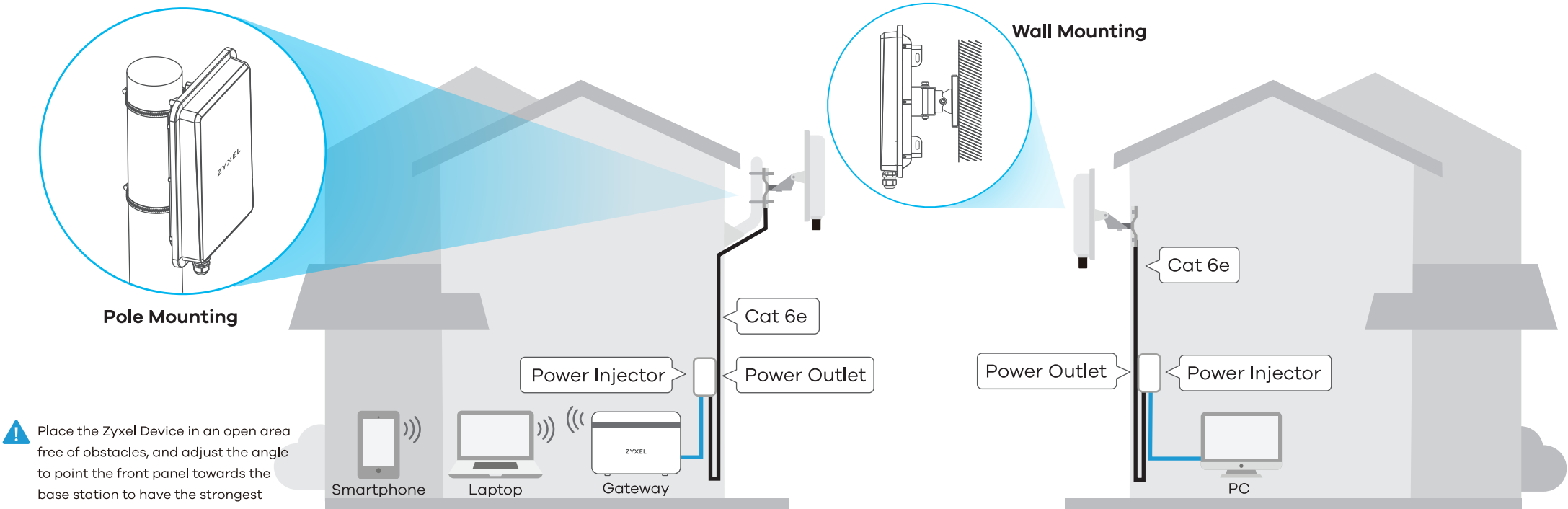


See the User's Guide at [www.zyxel.com](http://www.zyxel.com) for more information, including customer support and safety warnings.

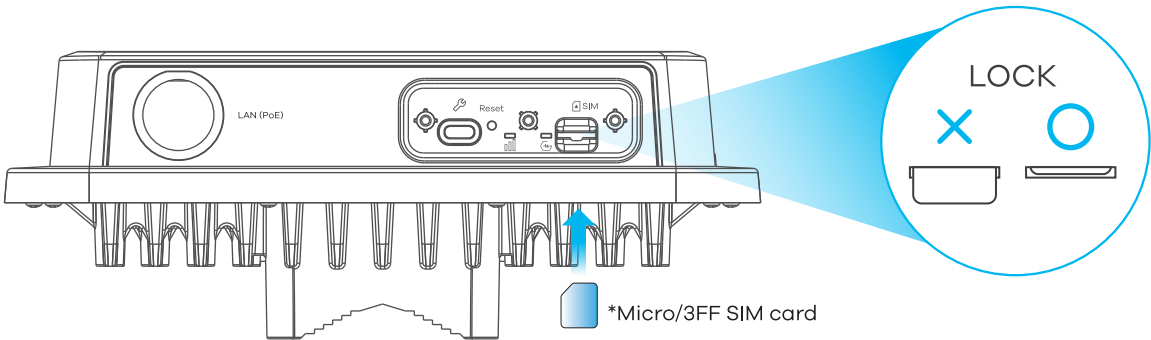
**EU Importer**  
Zyxel Communications A/S  
Gladsaxevej 378, 2. th. 2860 Søborg, Denmark  
<https://www.zyxel.com/dk/da/>

Copyright © 2023 Zyxel and/or its affiliates. All Rights Reserved.  

Location Examples

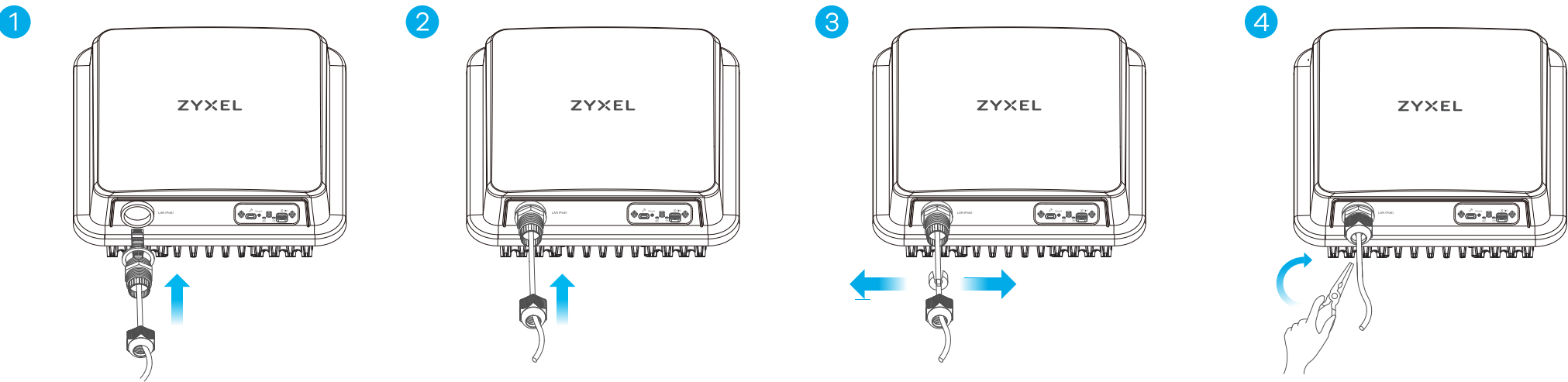


Step 1 SIM Card Installation

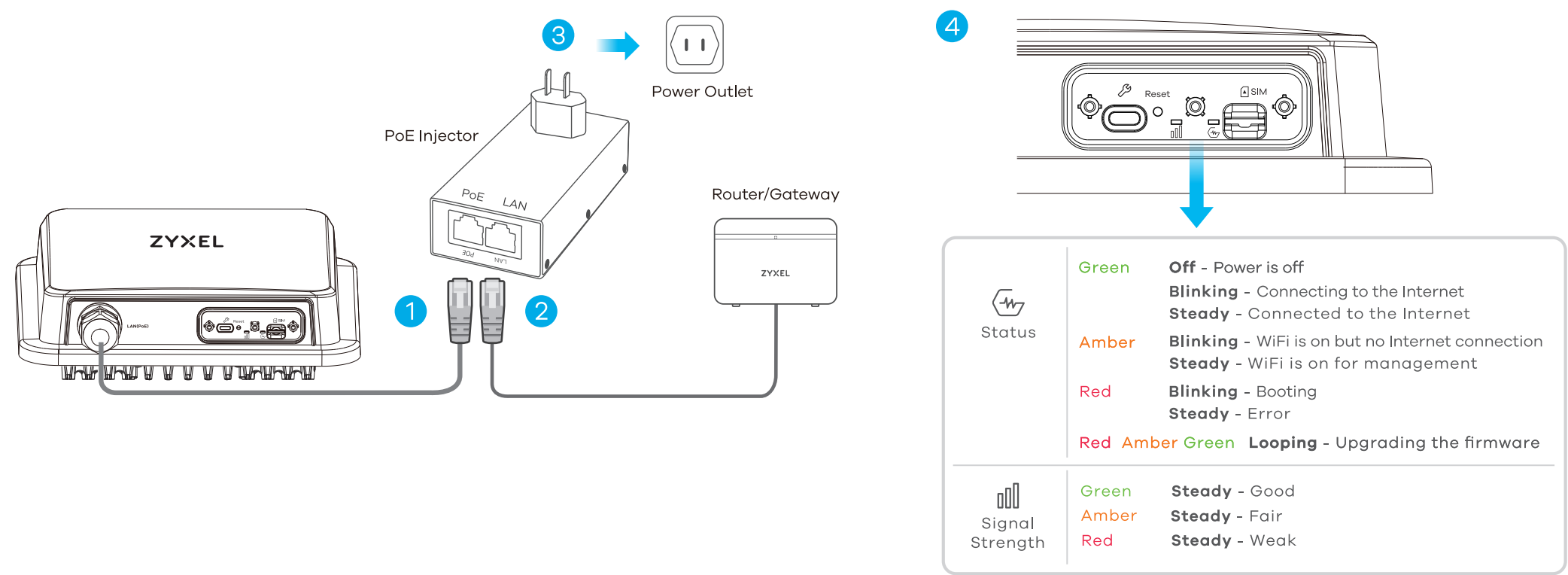


Make sure there is no Ethernet cable connected providing power using PoE. Insert your Micro/3FF SIM card provided by a 5G NR SP (Internet Service Provider) into SIM card slot. Make sure the SIM card is fully inserted into the card slot.

Step 2 Ethernet Cable Connection

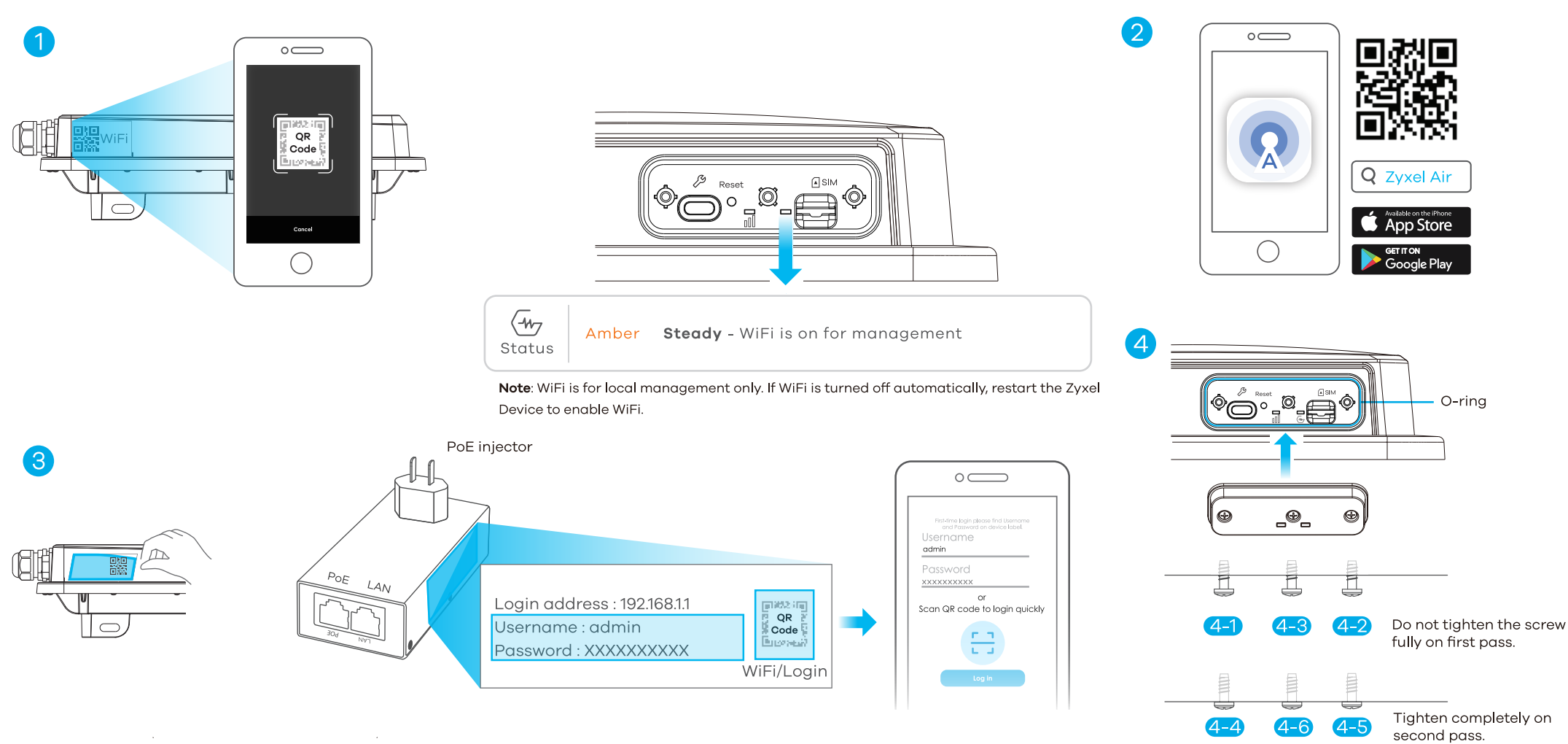


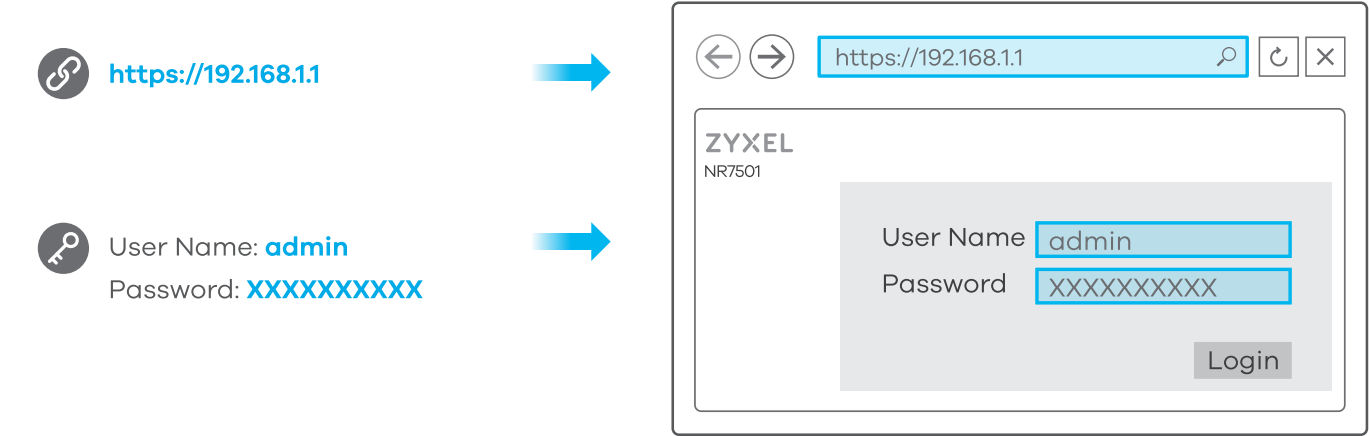
Step 3 PoE Cable Connections



- ① Connect the other end of the Ethernet cable to the provided PoE injector's **PoE** port.
- ② Use an Ethernet cable to connect the injector's **LAN** port to a router/gateway for initial configuration.
- ③ Connect the PoE injector to a power outlet.
- ④ Check the LEDs next to the SIM card slot.

Step 4 Initial Setup with the Zyxel Air App and WiFi

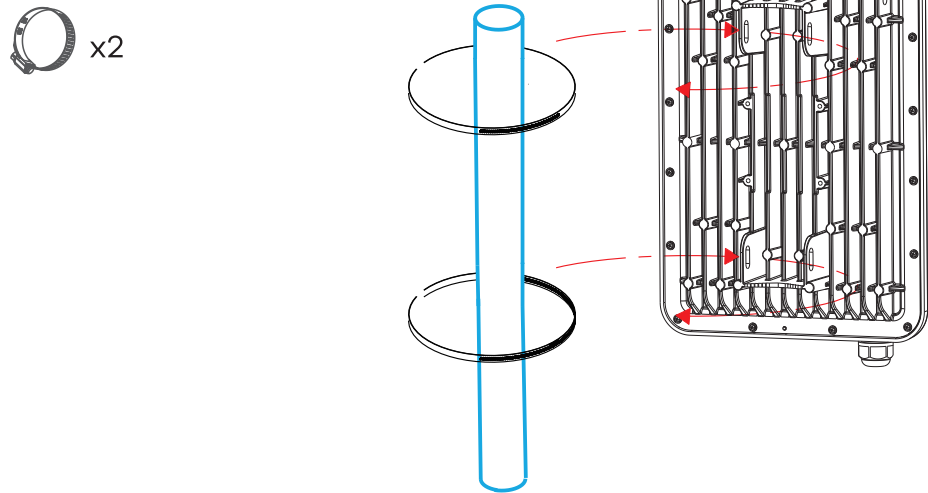




Open a web browser and go to <https://192.168.1.1>. Enter the default user name (admin) and password (see label), and then click **Login**.  
Note: After configuring the Zyxel Device, turn its WiFi off.

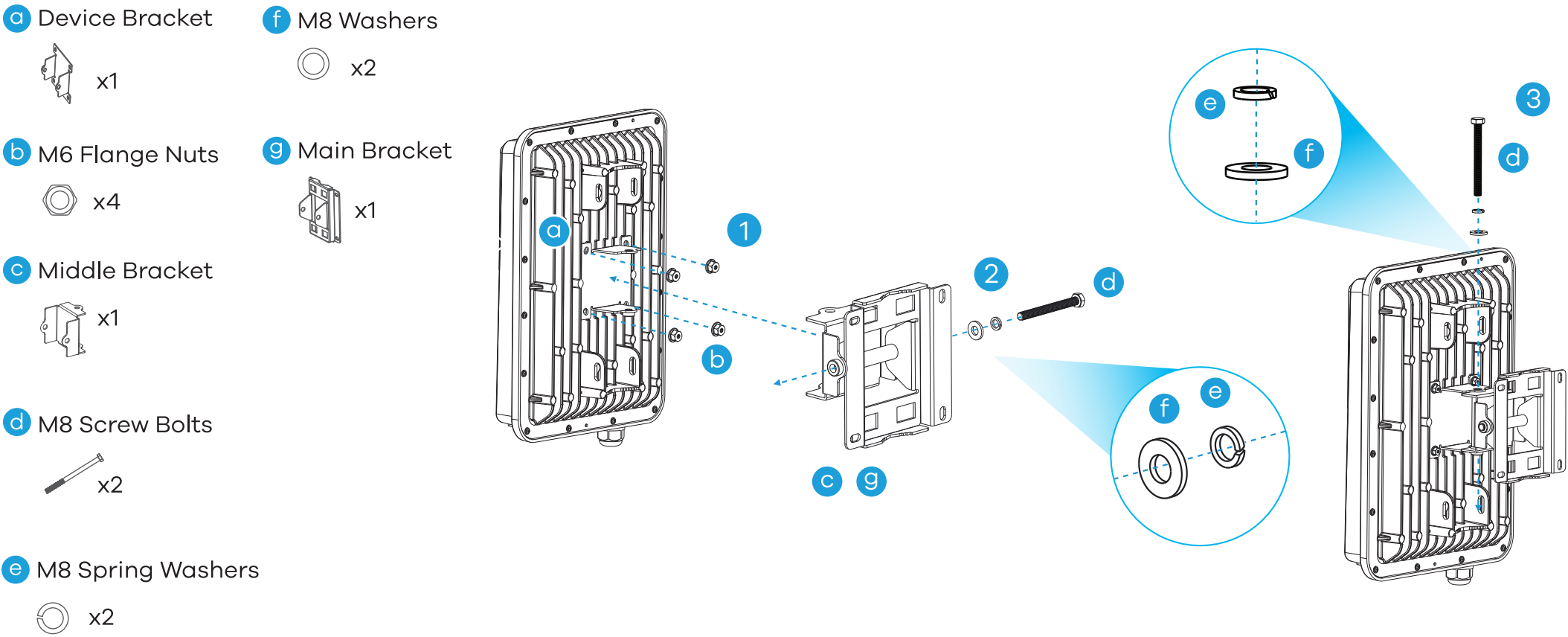
Mounting Option 1: Pole Mounting

Hose Clamps



Insert the hose clamps into the holes on the Zyxel Device. Use a screwdriver to tighten the hose clamps and secure the Zyxel Device to the pole.

Mounting Option 2: Wall Mounting - Tilt and Turn



- ① Use flange nuts to attach the device bracket to the back of the Zyxel Device.

② Follow step 2 in the drawing to align the main bracket with the middle bracket. Place the spring washer and washer on the screw bolt and insert the screw bolt through the holes to secure it.
- ③ Follow step 3 in the drawing to align the middle bracket with the device bracket. Place the spring washer and washer on the screw bolt and insert the screw bolt through the holes to secure it.

④ Follow the steps in **Wall Mounting** to complete the installation.



a Device Bracket



x1

b M6 Flange Nuts



x4

c Main Bracket



x1

d M8 Screw Bolt



x1

e M8 Spring Washer

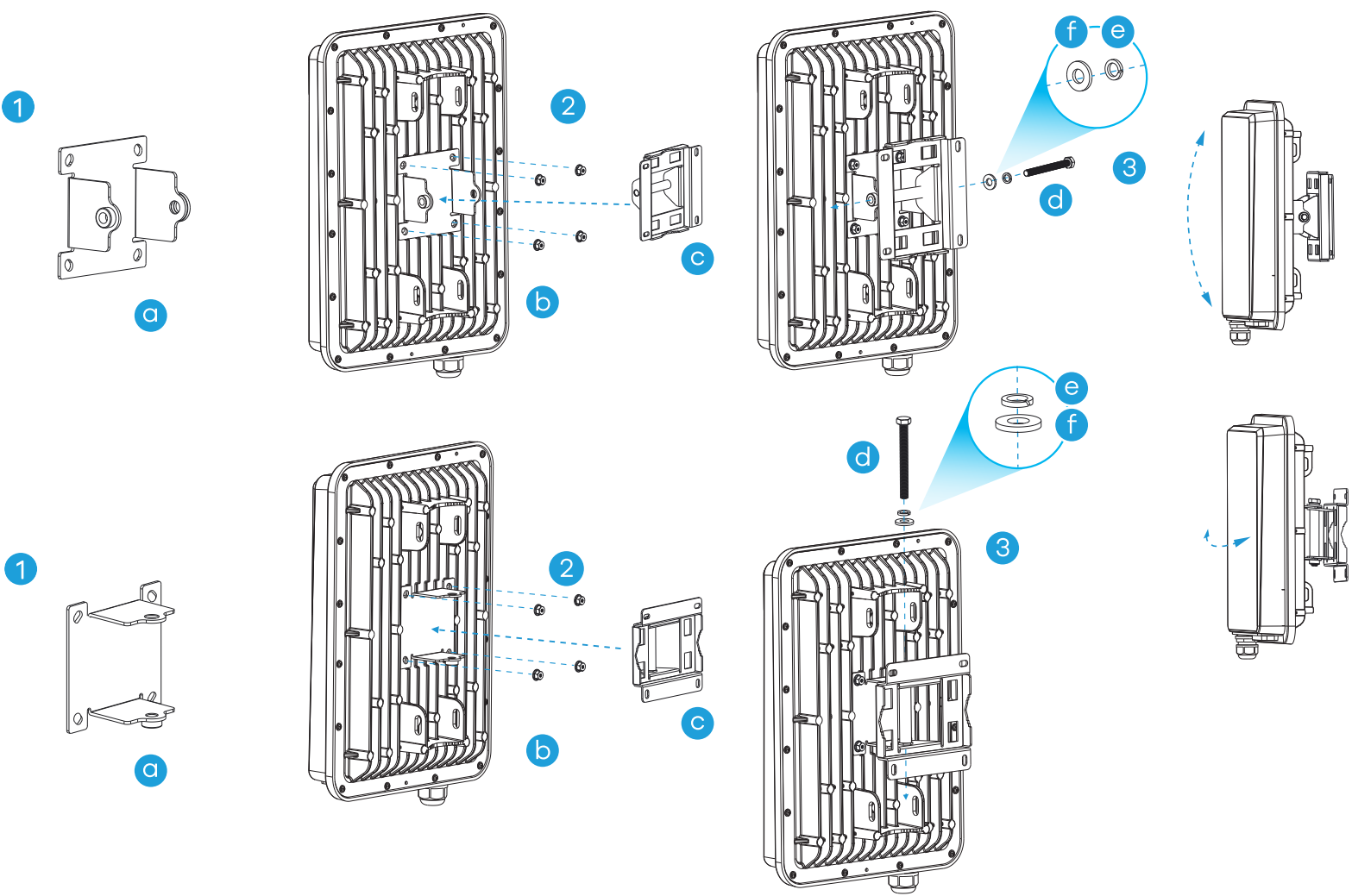


x1

f M8 Washer



x1



- ① Select the wall mounting direction (horizontal or vertical).
- ② Use flange nuts to attach the device bracket to the back of the Zyxel Device.
- ③ Follow step 3 in the drawing to align the main bracket with the device bracket. Place the spring washer and washer on the screw bolt and insert the screw bolt through the holes to secure it.
- ④ Follow the steps in **Wall Mounting** to complete the installation.

Wall Mounting

a Nylon Wall Plugs

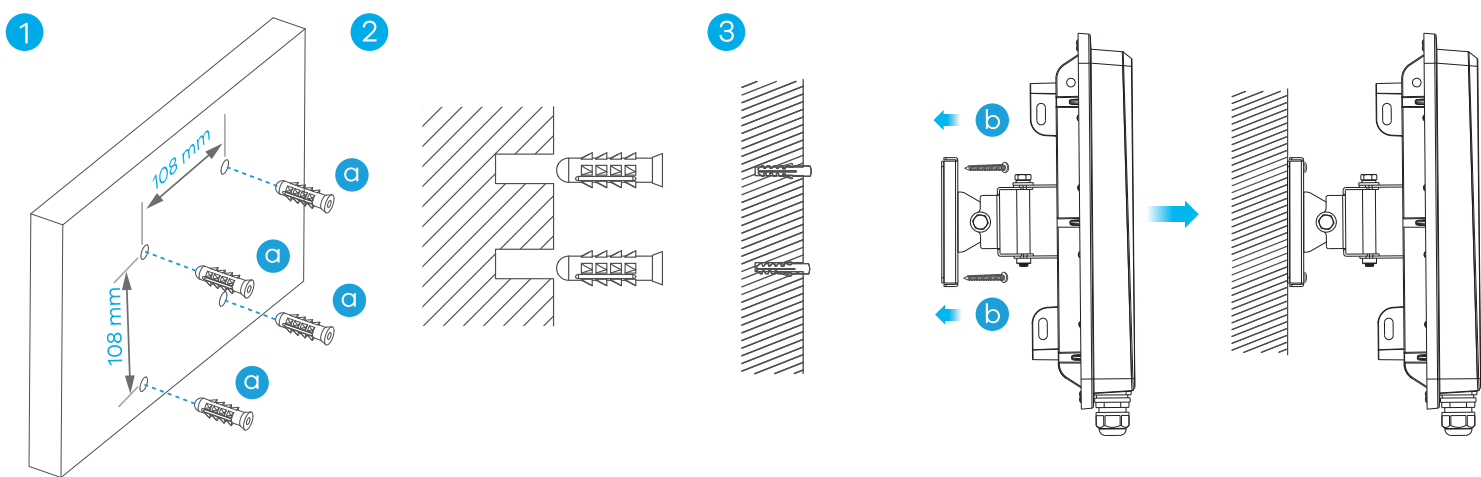


x4

b M4 Tapping Screws

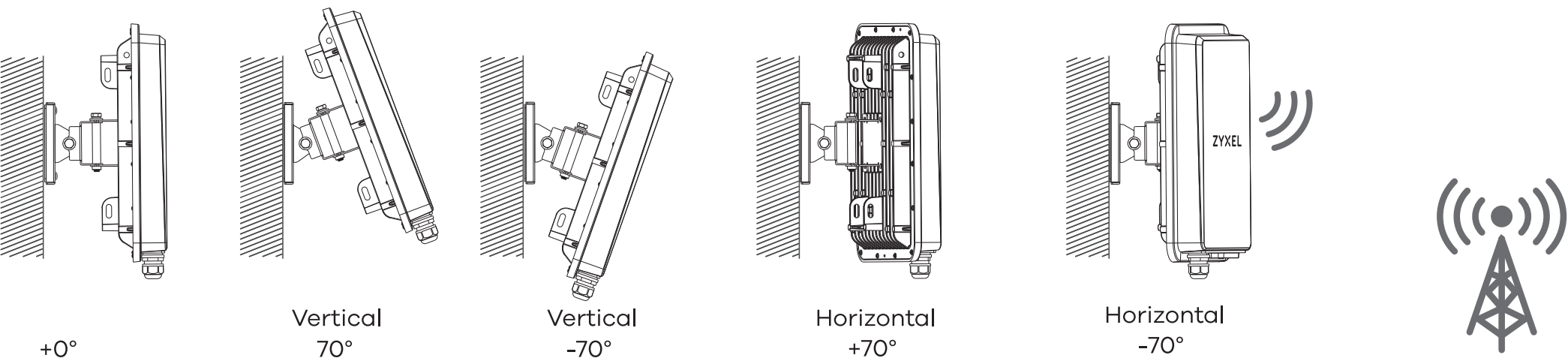


x4



- ① Use the four corner holes of the main bracket to mark holes on a wall. Drill four holes in a wall.
- ② Insert the nylon wall plugs into the holes.
- ③ Use tapping screws to secure the main bracket to the wall through the nylon wall plugs.

Step 5 Wall Mounting Angle Adjustment to Find the Optimal Signal for Zyxel Device



Use the Zyxel Air app to find the optimal 5G NR signal strength and manage your Zyxel Device.