



LTE7485-S905

4G LTE-A Outdoor Router

Zyxel LTE7485-S905 4G LTE-A Outdoor Router with the support of Cat. 16 and 3.5 GHz CBRS band is a CPE-CBSD Category B with maximum 36 dBm per 10 GHz channel EIRP and SAS client built-in. Deliver lightning-fast internet connectivity through Fixed Wireless Access (FWA) with a better signal performance over extended distances.








Benefits

Lightning-fast internet connectivity

Zyxel LTE7485-S905 employs 3GPP UE downlink Category 16 – the high-level practice LTE-A technology with data rates of up to 580/30 Mbps* through 8 spatial streams on 2 component carriers.

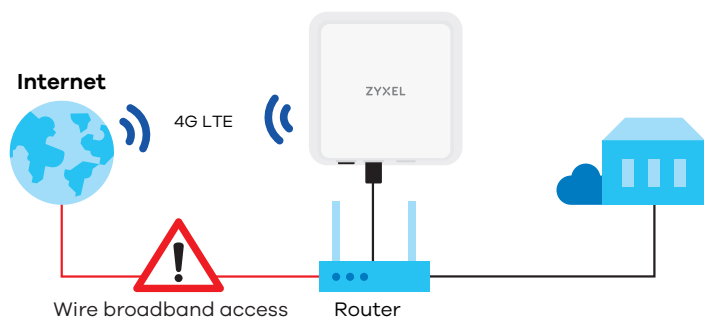
Enhance your service coverage with high-gain antennas

The FCC certified LTE7485-S905 and built-in SAS (Spectrum Access System) client allows you to increase your service reach because of high-power signal transmissions and 4x4 MIMO high-gain directional antenna of up to 13 dBi per element. The outdoor design enables it to work under near non-line-of-sight conditions to increase coverage.

-  Supports LTE band 48 (CBRS)
-  3GPP Release 12 Cat. 16/up to 580/30 Mbps* (DL/UL)
-  High-power CPE-CBSD with built-in SAS client
-  Built-in 4x4 MIMO, high-gain antennas of up to 13 dBi per element
-  Standard 802.3af/at Gigabit PoE
-  Remote management via TR-069 (TR-181 and TR-143 speed test) HTTP/web GUI and FTP
-  IP68 hardened enclosure with industrial grade components
-  Zyxel Air app (iOS and Android)

Non-stop connectivity with “Dual-WAN Failover” design

The wireless LTE allows you to take advantage of the 2nd WAN without a cabling plan. As long as the gateway supports “Dual-WAN Failover”, you can just connect Zyxel LTE7485-S905 to the existing gateway and set LTE as the failover WAN and relieve the risk of network outage.



Easy installation with Zyxel Air

The LTE7485-S905 comes with an IEEE 802.3af/at Power over Ethernet (PoE) and a subscriber app – Zyxel Air. The intuitive user interface of Zyxel Air provides the necessary assistance from device setup to routine management. You can minimize service calls during the installation process while enhancing a satisfying user experience.



Remote management for lower OPEX

With TR-069, TR-181 and TR-143 support, the Zyxel LTE7485-S905 effectively secures OPEX by reducing the frequency of on-site support and by providing simplified diagnostic, configuration and troubleshooting processes.

Specifications

System specifications

IP networking

- Supports IPv4/IPv6 dual stack (NDP IPv6)
- DHCP server
- Supports ICMP
- Virtual Private Network (VPN) pass-through
- Supports NAT/NAPT
- Supports DMZ
- Supports port forwarding/trigging
- Supports ALG

Routing

- Supports bridge/router modes
- Supports dynamic DNS for first APN
- Supports remote management under bridge mode

IP firewall

- Firewall can be enabled or disabled via GUI
- DoS attack prevention

- Supports SPI
- Application-level firewall
- Filters LAN MAC address
- Filters LAN IP address

Management

- Supports local/remote device management and firmware upgrade via TR-069 and web GUI
- APN management
- PIN management
- CLI/SSH (local and remote SSH access)
- Supports UPNP IGD
- Supports SSH with key access
- Supports bandwidth management
- Supports Zyxel Air app (iOS and Android) for easy installation
- Supports remote throughput testing (TR-143)
- Supports Band Pilot system management
- SAS client built-in

Hardware specifications

LTE interface

- Standard-compliant: 3GPP UE Category 16
- Supports LTE band 48 (CBRS)(LTE TDD 3550-3700 MHz)
- CBRS Category B CPE-CBSD**
- Supports DL TM1/2/3/4/6/7/8/9
- LTE antennas: 4 embedded directional antennas of up to 13 dBi per element (4x4 MIMO)
- Supports DL 2CC, 4x4 MIMO, 8 spatial streams
- Supports DL up to 4 Carrier Aggregations, UL up to 2 Carrier Aggregations
- Supports DL modulations: QPSK, 16-QAM, 64-QAM and 256-QAM
- Supports UL modulations: QPSK, 16-QAM and 64-QAM
- Supports DL speeds of up to 580 Mbps by TDD conf. 2*

- Supports UL speeds of up to 30.2 Mbps by TDD conf. 2*
- Max EIRP 36 dBm/10 MHz

WiFi interface for management

- 802.11 n/g/b, 2.4 GHz
- Hidden SSID
- MAC address filtering
- 2 embedded antennas
- For local management purpose only

Hardware interface

- One Gigabit RJ-45 PoE LAN port
- One tri-color LED indicator for:
 - Power status
 - Internet status
 - WiFi status
- One 3FF Micro SIM card socket
- One WiFi on/off and WPS button
- One reset and reboot button

Power interface

- Standard 802.3af/at Power over Ethernet (PoE) PD support compatible
- Power consumption at PoE: 13 W (peak)

Physical specifications

- Item dimensions (WxDxH): 254 x 255 x 58 mm (9.99" x 10.03" x 2.28")
- Item weight: 1100 g (2.43 lb.)
- Packing dimensions (WxDxH): 420 x 280 x 108 mm (16.54" x 11.02" x 4.25")
- Packing weight: 3050 g (6.72 lb.)

Environment specification

Ingress Protection rating

- IP68

Lightning protection

- K.21 enhanced mode, 6 KV

Operating environment

- Temperature: -40°C to 60°C (-40°F to 140°F)
- Humidity: 5% to 95% (non-condensing)

Storage environment

- Temperature: -40°C to 70°C (-40°F to 158°F)
- Humidity: 5% to 95% (non-condensing)

Certification

- FCC**
- OnGo**

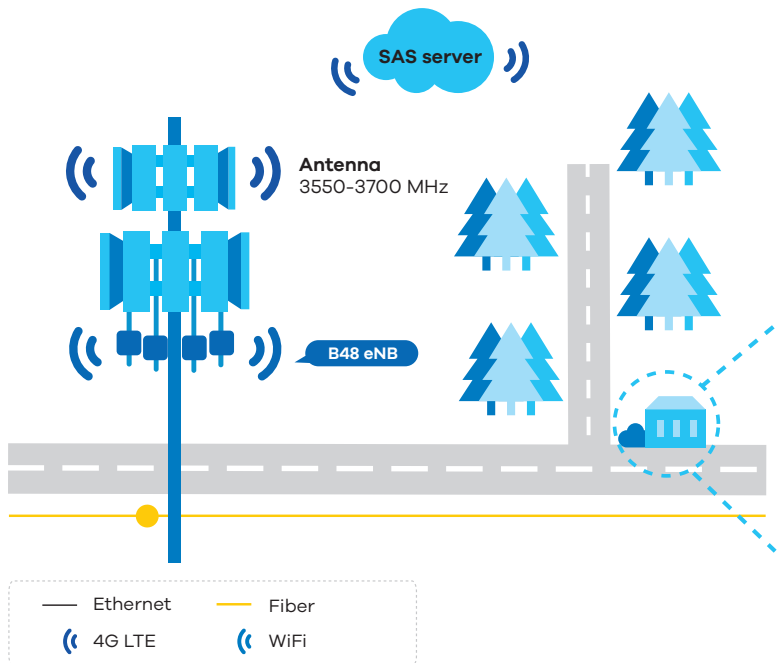
Package contents

- Gigabit PoE injector
- Ethernet cable
- Cable gland
- Quick Start Guide
- Wall/pole mounting kit
- Grounding kit

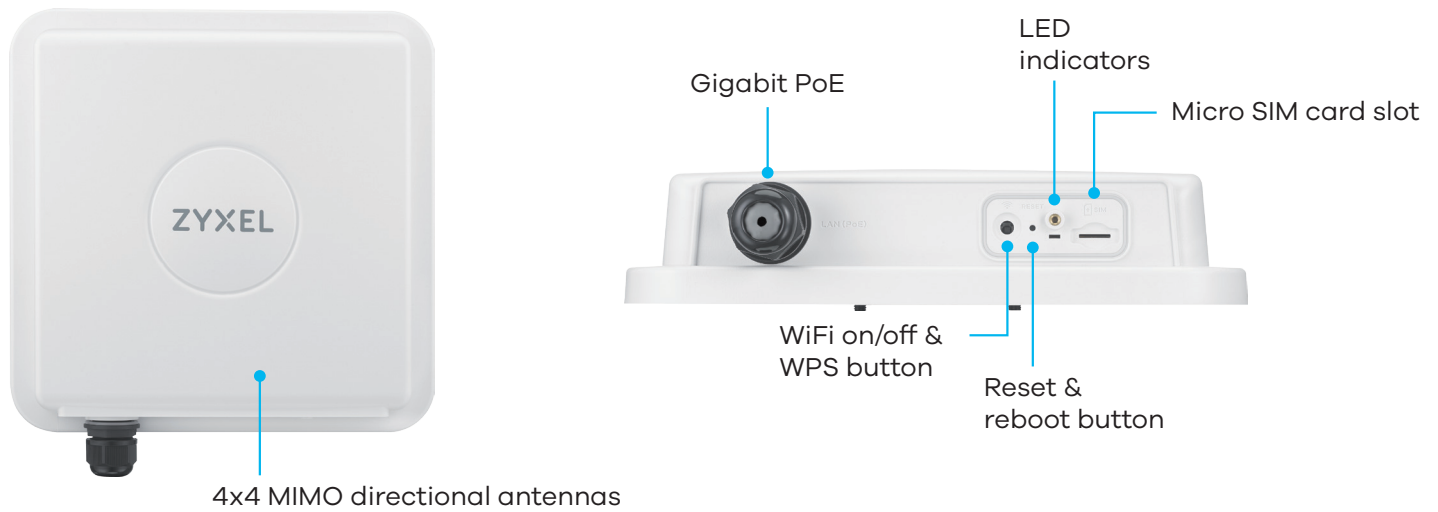
* The maximum wireless data transfer rate is derived from 3GPP specifications close to DL UE Category 16 and UL UE Category 13. The actual data transfer rate will vary from network environment including distance, network traffic, building site materials/construction, interference from other wireless devices, and other adverse conditions.

** Under the process.

Application diagram



Hardware description



For more product information, visit us on the web at <https://service-provider.zyxel.com>

Copyright © 2022 Zyxel and/or its affiliates. All rights reserved.
All specifications are subject to change without notice.



Datasheet [LTE7485-S905](#)



22/06/22