

EE4410-00

Tri-Band Wireless BE18000 2.5G Ethernet Gateway



Quick Start Guide

ENGLISH

Package Contents



Device



Power Adapter



Ethernet Cable



Quick Start Guide

Support Information



<https://www.zyxel.com/service-provider/global/en/tech-support>

US Importer

Zyxel Communications, Inc.  
1130 North Miller Street Anaheim, CA 92806-2001  
<https://www.zyxel.com/service-provider>

Go to <https://www.zyxel.com/service-provider/global/en/download-enquiry> to request a User's Guide for configuration assistance and related safety warnings.

Copyright © 2025 Zyxel and/or its affiliates. All Rights Reserved.

Zyxel One App



Scan to Download



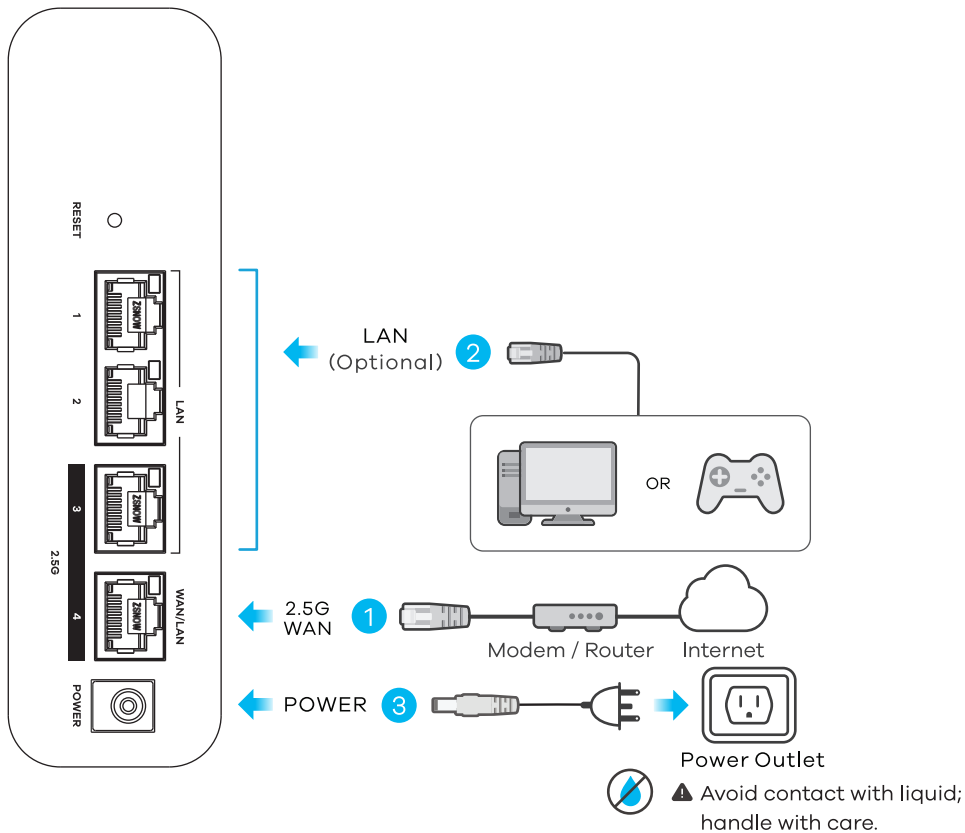
Q Zyxel One

Available on the iPhone  
App Store

GET IT ON  
Google Play




**EN** Download the **Zyxel One** app for easy installation guidance or follow the connection steps outlined below. You can use the app or the web configurator to manage your Device.

Step 1 Hardware Connections



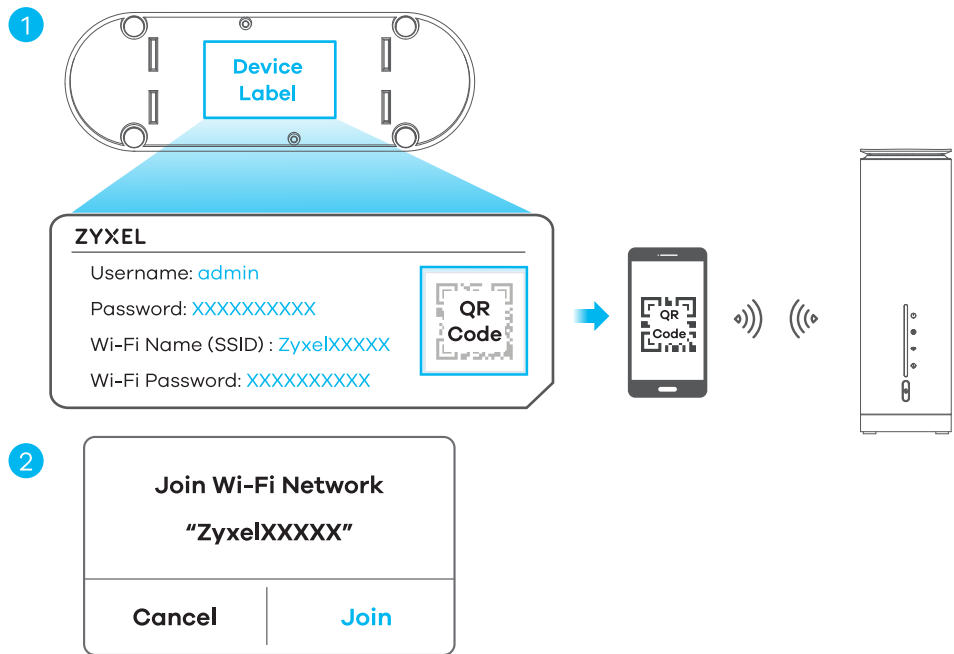
- EN** ① Use an Ethernet cable to connect the Ethernet **WAN** port to a gateway modem for Internet access.
- ② Connect a computer to the **LAN** port using the Ethernet cable (optional).
- ③ Use the included power adapter to connect the power plug to a power outlet. The **Power** / **Internet** / **WiFi** LEDs will light up when the setup is complete.
- Note:** If the LEDs do not turn on, please retry ① to ③ or contact your service provider for assistance.

POWER, INTERNET and Wi-Fi LEDs Indicator Table

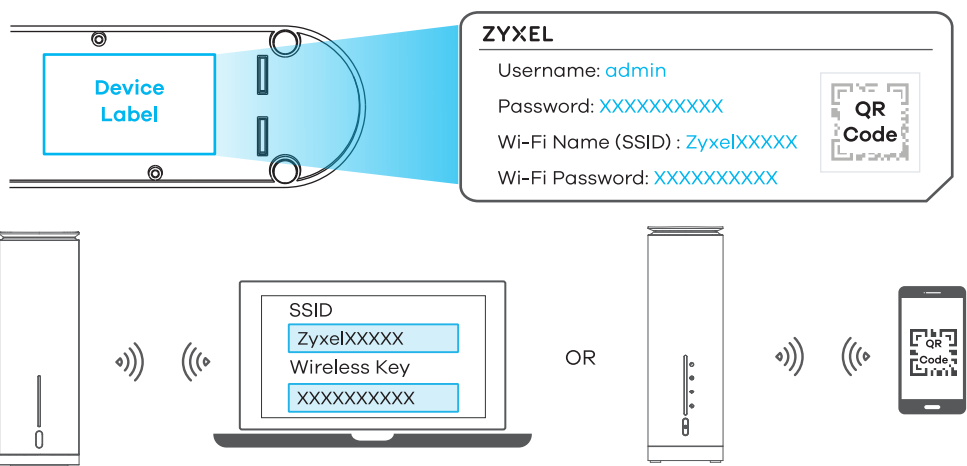
 POWER	<div>Green</div> <div>On - Power is on.</div> <div>Blinking - Starting up.</div> <div>Red</div> <div>On - System failure.</div> <div>Blinking - Mesh failure or upgrading firmware.</div>
 INTERNET	<div><b>Router Mode</b></div> <div>Green</div> <div>On - Internet is ready.</div> <div>Blinking - Transmitting/receiving internet data.</div> <div>Red</div> <div>On - Attempt to get an IP address failed.</div>
 Wi-Fi	<div>Green</div> <div>On - 2.4G, 5G and 6G wireless connections are ready.</div> <div>Blinking - Transmitting/receiving data.</div> <div>Off</div> <div>2.4G or 5G or 6G wireless connections is not ready or failed.</div>

Step 2 Wi-Fi Connection - A or B or C

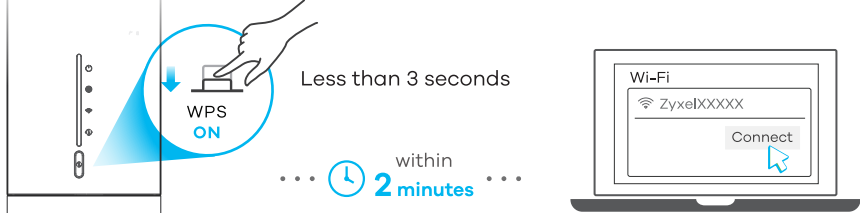
A Manual Connection (Scan QR Code)



B Manual Connection (using SSID)



C Automatic Connection (using WPS)



WPS LED Indicator Table

	Green	On - Mesh network is good.
	Blinking	- WPS in progress.
	Amber	Blinking - IPTV SSID is pairing.
	Off	No WPS activity.

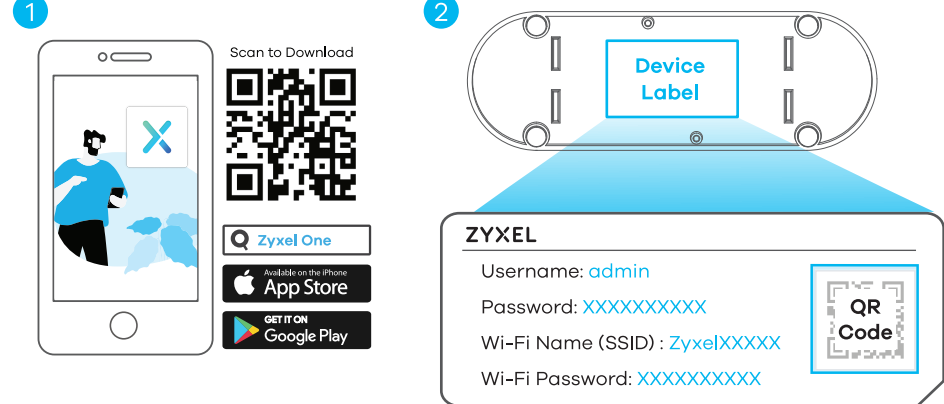
- EN A ① Use your mobile device to scan the QR code on the Device's label.  
② After scanning the QR code, join this Wi-Fi network and you can surf the Internet.

- EN B Notebook: Use the **SSID** and **Wireless Key** on the device label to connect wirelessly to the Device.  
Mobile device: Scan the QR code on the device label and connect to the Device Wi-Fi network.

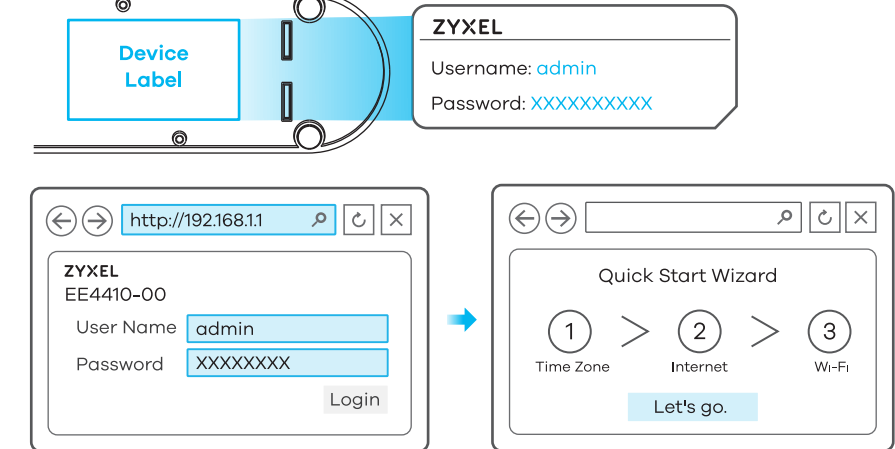
- EN C Press the **WPS** button until the WPS LED blinks in green.  
Press the **WPS** button on the client. If the WPS method fails, scan the QR code or use the **SSID** and **Wireless Key** to set up a Wi-Fi connection.

Step 3 Management - A or B

A With App



B With Web Portal



See the FCC/ISED E-Label information at <http://192.168.1.1/legalInfo>.  
Référez-vous à l'adresse <http://192.168.1.1/legalInfo> pour les informations sur l'étiquette électronique FCC/ISED.

- EN A ① Scan the QR code in this guide to download the **ZyXel One** app.  
② Open the **ZyXel One** app and scan the QR code on the device label to set up the Device.

- EN B Open a web browser and go to <http://192.168.1.1>. Enter the default **User Name** and admin **Login Password** (on the device label), and then click **Login**. The Wizard runs. Follow the Wizard prompts to complete the setup.